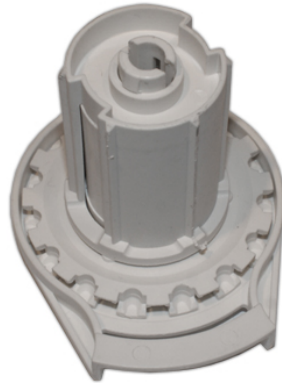
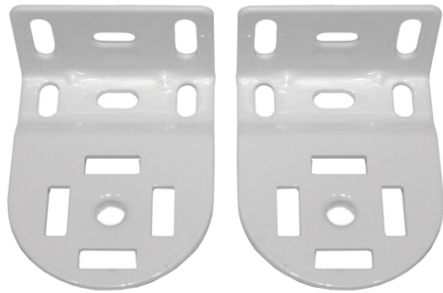




# Basic Clutch Set



## Includes:

- Clutch, spring-loaded idle end, 2 universal mounting brackets.

## Features:

- Fits 2 sizes of tube (1.25 and 1.5 inch).
- White Universal mounting brackets support both clutch sizes.
- Adjustable screw slot for both width and depth simplifies installation.
- Idle end turning point is plastic on plastic (as opposed to plastic on metal). This reduces friction and increases longevity.

## Box Size:

- 100 sets